

With the original ESCHA accessories you will provide for order, safety and clear overview of your application.

The mounting- and installation solutions, protective caps, and labels fit exactly for our connectors and junction-systems.

Find out more about quality and variety of usage.

## Original accessories

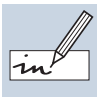
Mounting- and installation solutions for round connectors and junction systems



Protective caps for round connectors, junction systems and flanges



Labels for cables, connectors and junction systems



Spare nuts for flanges, ground connections



**ESCHA Bauelemente GmbH**  
Elberfelder Str. 32 | 58553 Halver  
Phone +49 2353 708 - 800  
Fax +49 2353 708 - 410  
Germany

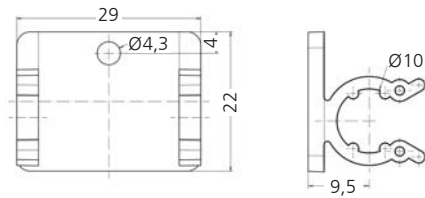
[www.escha.de](http://www.escha.de)

1000176 | 01.12



**Mounting-clip**  
for M8x1 connectors

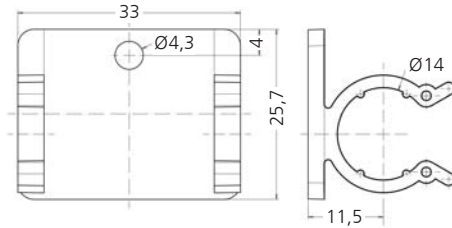
POM black



Mounting-clip M8x1	10x clips	8047658
Mounting-clip M8x1	10x clips + 10x screws M4x8	8047663

**Mounting-clip**  
for M12x1 connectors

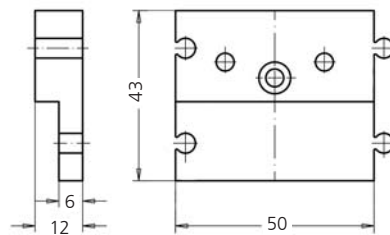
POM black



Mounting-clip M12x1	10x clips	8047660
Mounting-clip M12x1	10x clips + 10x screws M4x8	8047664

**Mounting-set**  
for S89 2-way junctions

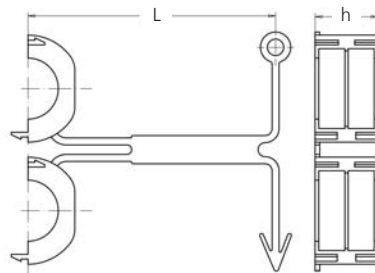
PA black



Mounting-set S89	2x carrier plates + 4x screws M4x25 + 4x nuts M4	8036078
------------------	--	---------

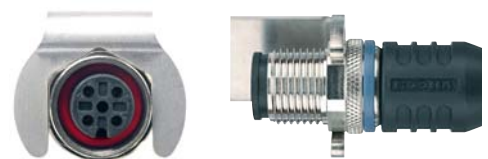
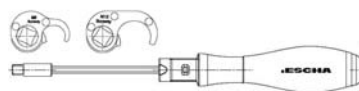
**Safety-clip**  
M8x1 | M12x1  
Against accidental  
disconnection  
under pressure

PA black

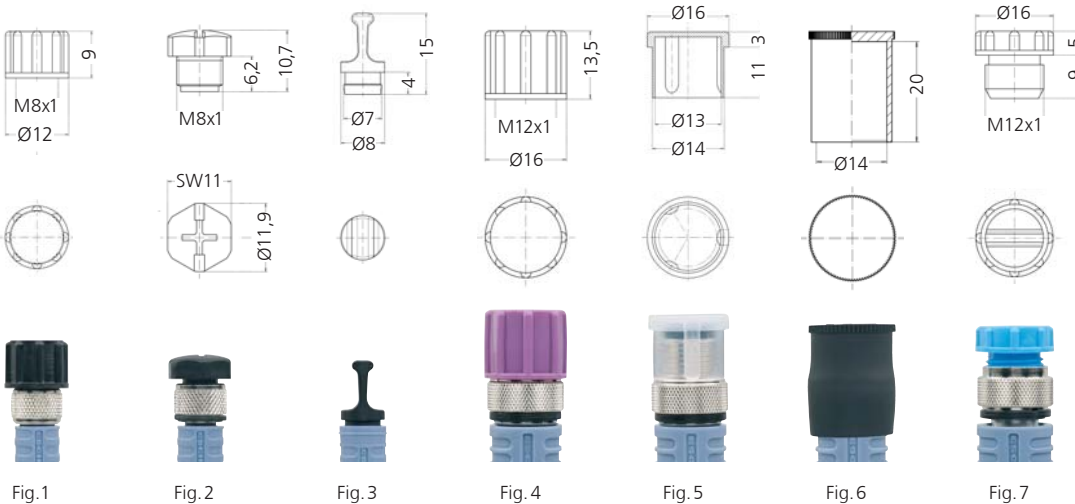


Type-designation		L [mm]	h [mm]	Order-No.
Safety-clip	M8x1	53	9.4	8040691
Safety-clip	M12x1	53	13.5	8040501

**Torque-wrench set**  
M8x1 | M12x1



Type-designation	Adjustment range [Nm]	Set	Order-No.
M8x1   M12x1 (knurl)	0,5 - 1,7	Body + insert M8x1 + insert M12x1	8031651
M8x1   M12x1 (hexagon)	0,4 - 1,0	Body + insert M8x1 + insert M12x1	8052082

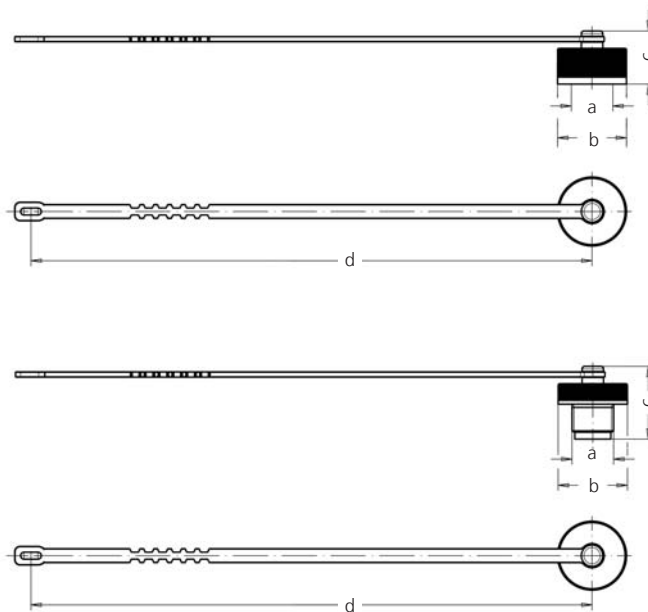


**Safety-caps**  
**Safety-stoppers**  
M8x1 | M12x1



\* Colours according to RAL

Fig.	Type-designation	for	colour*	Order-No.
1	safety-cap	M8x1 male thread	BK   RAL9005	IP67 8041582
2	safety-stopper	M8x1 female thread	BK   RAL9005	IP67 8015075
3	safety-stopper	Ø8mm female snap-in	BK   RAL9005	IP67 8010971
4	safety-cap	M12x1 male thread	BK   RAL9005	IP67 8036742
4	safety-cap	M12x1 male thread	VT   RAL4001	IP67 8041995
4	safety-cap	M12x1 male thread	BU   RAL5012	IP67 8041996
4	safety-cap	M12x1 male thread	GY   RAL7035	IP67 8041994
4	safety-cap	M12x1 male thread	YE   RAL1021	IP67 8000031
5	dustproof cap	M12x1 male thread	transparent	8009778
6	dustproof cap	M12x1 male   female	BK   RAL9005	8043617
7	safety-stopper	M12x1 female thread	BK   RAL9005	IP67 8000004
7	safety-stopper	M12x1 female thread	VT   RAL4001	IP67 8041992
7	safety-stopper	M12x1 female thread	BU   RAL5012	IP67 8041993



**Safety-caps**  
M8x1 | M12x1  
captive

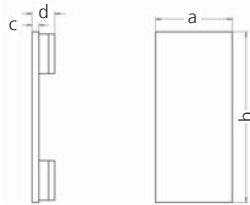
**Safety-stoppers**  
M8x1 | M12x1  
captive

Type-designation	for	a	b [mm]	c [mm]	d [mm]	Order-No.
Safety-cap	male thread	M8x1	Ø12	13.3	160	IP67 8048566
Safety-stopper	female thread	M8x1	Ø12	16.0	160	IP67 8048567
Safety-cap	male thread	M12x1	Ø20	15.5	160	IP67 8048569
Safety-stopper	female thread	M12x1	Ø20	21.0	160	IP67 8048568



## Labels

for passive junctions  
and valve-connectors

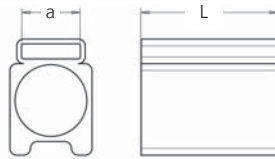


### Type-designation

	a [mm]	b [mm]	c [mm]	d [mm]	Order-No.
Labels M8x1 passive-junctions	5.0	10.0	1.0	2.5	8011349
Labels M12x1 passive-junctions	9.0	20.0	0.8	2.6	8015002
Labels valve-connector type A	7.0	20.0	1.0	–	8047110
Labels valve-connector type B/BI, C/CI	4.0	11.0	1.0	–	8047109

## Label-carrier

transparent



### Type-designation

	Material	a [mm]	L [mm]	cable [mm]	Order-No.
Label-carrier 3/18	PVC	3.0	18.0	Ø 3.5...6.0	8000052
Label-carrier 4/18	PVC	4.0	18.0	Ø 6.0...10.0	8000060
Label-carrier 3/30	thermopl. ESC (halogen-free)	3.0	30.0	Ø 3.5...6.0	8000091
Label-carrier 4/30	thermopl. ESC (halogen-free)	4.0	30.0	Ø 6.0...9.0	8000092



## Spare nuts

for flanges  
CuZn  
nickel-plated

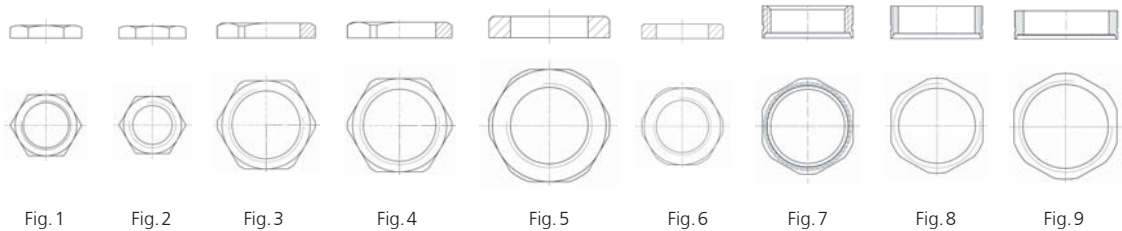
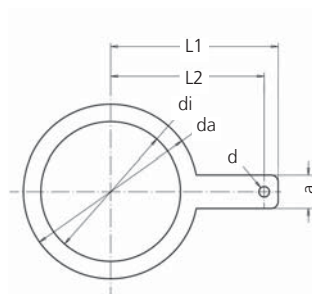


Fig.	Type-designation	Thread	A/F	h [mm]	for flanges	Order-No.
1	Hexagon nut	M8x0.5	10	2.0	M8x1   PFKS, PFS	8004923
2	Hexagon nut	M8x1	10	2.0	M8x1   PFSF	8004971
3*	Hexagon nut	PG9	18	3.0	M12x1   PG9	8004913
4*	Hexagon nut	M16x1.5	19	2.8	M12x1   M16x1,5	8029359
5	Hexagon nut	M20x1.5	24	3.0	M12x1   M20x1,5	8029360
6*	Hexagon nut	M12x1	16	3.0	M12x1   FSF	8004930
7	Hexagon nut	PG9	17	6.0	M12x1   FKD, FSD PG9	8004874
8*	Hexagon nut	M16x1.5	17	6.0	M12x1   FKD, FSD M16	8027491
9*	Hexagon nut	M20x1.5	22	6.0	M12x1   FKD, FSD M20	8027492

\* Available in stainless steel on request | A/F (across flats) may differ

## Solder tags

for grounding of flange housings  
CuZn nickel-plated



	L1 [mm]	L2 [mm]	di [mm]	da [mm]	d [mm]	a [mm]	h [mm]	Order-No.
Solder tag M16x1.5	22.0	20.0	Ø16.0	Ø21.0	Ø1.5	4.8	0.8	8036043
Solder tag M20x1.5	24.0	22.0	Ø20.0	Ø25.0	Ø1.5	4.8	0.8	8036044