

Overview PG-thread vs. Metric thread

The interim period for DIN 46320 „screwing for cables and conducting lines with PG-thread“ expired on 31.12.1999. Since then, screwing for cables and conducting lines had had to comply with the national standard 46319 before this was replaced by EN 50262 on 01.03.2001.

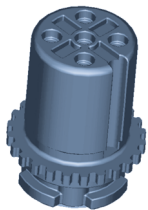
Comparison PG-thread vs. Metric thread

Wrench width for cable screwing according to EN 50262

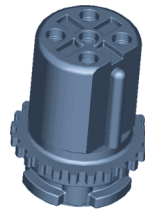
PG	Metric thread	max. Wrench width [mm]	max. Corner length [mm]
PG7	M 10x1.5 M 12x1.5	16	18
PG9 PG11	M 16x1.5	21	23
PG13.5	M 20x1.5	25	28

A | B Coding of M 12x1 Connectors

To guarantee protection against polarity reversal, connectors are coded. This coding is realised by a peg or a notch on the contact carrier. Two coding types are distinguished



A-Coding
Coupling has coding-notch
Plug has coding-peg



B-Coding
Coupling has coding-peg
Plug has coding-notch

Note: B-coded couplings and plugs from ESCHA are marked by the letter W (see Type-code).

Erklärung der Farbangaben der Leiter

WH white	BN brown	GN green	YE yellow	GY grey
PK pink	BU blue	RD red	BK black	VT violet
GY/PK grey/pink	RD/BU red/blue	WH/GN white/green		
BN/GN brown/green	WH/YE white/yellow	YE/BN yellow/brown		
WH/GY white/grey	GY/BN grey/brown	GN/YE green/yellow		